

# Max<sup>TM</sup> 3

ulricheasyINJECT

Contrast media injector for MRI and digital, contrast-enhanced mammography

New:  
Digital, contrast-enhanced  
mammography



24 h

24-hour multi-use  
in MRI

**Ulrich**  
medical



## Advantages at a glance



### Quick and simple

- Set up just once daily
- Fast patient changeover
- Intuitive operator control concept



### Cost-effective and efficient

- Low cost of disposables
- Optimized contrast media management
- Efficient workflows



### Hygienic and safe

- Closed system: direct injection from the original media containers
- Automatic patient-side air monitoring
- SafeConnect with touch protection

**New**

## Digital, contrast-enhanced mammography



- Enables fast operation and patient-side injection start directly on the injector
- Compact device base ensures sufficient space in the mammography room
- Using a contrast media injector provides a continuous flow of contrast media
- CM bolus is administered accurately, which then increases the quality of the imaging
- Cordless device concept for free and flexible positioning of the injector in the mammography room

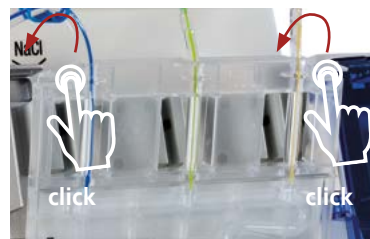


## Simple to use

- Set up just once daily
- 24-hour use of the Easy-Click-Cassette
- Fast patient changeover
- Intuitive operator control concept
- Optimized contrast media management by means of two contrast media connection points
- Cordless operation

### Set up made easy

- Insert Easy-Click-Cassette
- Connect patient tubing
- Attach media containers
- Done!



### Patient tubing is changed over within a few seconds

- Detach patient tubing
- Connect new patient tubing
- Done!



## Cost-effective & efficient

- Low cost of disposables
- Optimized contrast media management by using large containers
- Efficient workflows
- Minimal residual contrast medium due to automatic switchover from empty to full container (CM-Loop)

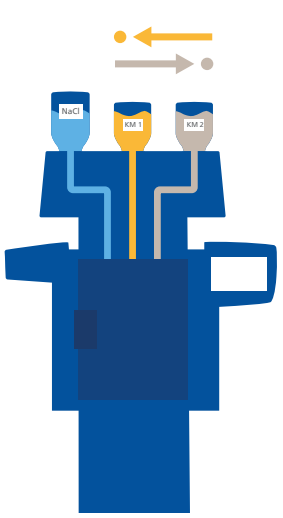
## Focus on hygiene & safety

- SafeConnect with touch protection
- Easy-Click-Cassette approved for 24-hour use<sup>1</sup>
- Reliable protection against retrograde contamination<sup>2</sup>
- Direct injection from the original media containers
- Patient-side air detector protects against air injection
- Closed system

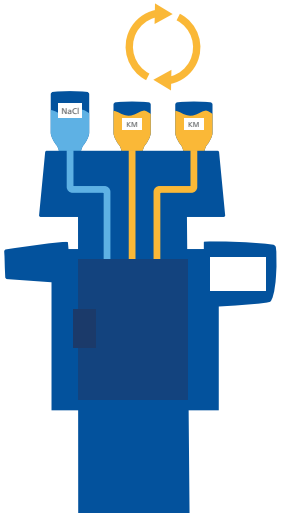
<sup>1</sup> Source: GLP-compliant study: "Microbiological Contamination Control Study of the ulricheasy-INJECT Max 3 System", report 12046467, dated: February 28, 2018, author: UL International GmbH (Grenzenstr. 13, 88416 Ochsenhausen, Germany); study not published, can be accessed upon request with nondisclosure agreement.

<sup>2</sup> Source: GLP-compliant study: "Virological evaluation of Retrograde Contamination Potential at the Pump Tubing Set (XD 8003) and the Patient Tubing Set (XD 2035) of the CT motion (XD 8000)", report 10874251 2.1, dated: Thursday, November 12, 2015, author: UL International GmbH (Grenzenstr. 13, 88416 Ochsenhausen, Germany); study not published, can be accessed upon request with nondisclosure agreement. The results of the non-clinical testing mentioned are applicable to the ulricheasyINJECT systems Max 3 and Max 2M as the physical barrier with respect to possible retrograde contamination is implemented in all of the systems by means of structurally identical two check valves.

# Flexible CM management & simplified workflows



**CM-Select**  
Selection of a second contrast medium



**CM-Loop**  
Alternate switchover with two identical contrast media

# Technical data overview

Dimensions (L x W x H) – without media rod	530 mm x 530 mm x 1372 mm
Weight	Approx. 40 kg
Power supply	Battery
Voltage supply (battery charging)	Voltage rating 100-240 VAC / 50/60 Hz
Media delivery	Roller pump
Flow rate	0.1 to 10 mL/s, in increments of 0.1 mL/s (MRI) 0.1 to 4 mL/s, in increments of 0.1 mL/s (contrast-enhanced mammography)
Maximum injection volume	400 mL/patient 1 mL – 10 mL, in increments of 0.1 mL > 10 mL – 100 mL, in increments of 0.5 mL > 100 mL – 400 mL, in increments of 1 mL
Reservoir capacity	Contrast media: max. 2 x 200 mL (MRI), max. 2 x 250 mL (contrast-enhanced mammography) NaCl 1 x 1,000 mL max. or 1 x 2,000 mL max. with a bag and optional IV pole
Adjustable pressure limit	2 - 14 bar in increments of 0.1 bar (29 – 203 psi in increments of 1 psi)
Air monitoring	3 detectors for the media supply tubing, 1 detector for the Easy-Click-Cassette and patient tubing
Pressure monitoring	1 pressure sensor
User interfaces	Terminal: 12" color TFT touch screen. Injector: 4" color TFT touch screen
Data import and export	USB interface
Data transfer injector - terminal	WLAN (802.11 b/g/n)
Number of boli (phases) per injection program	40 max.
Number of injection programs that can be saved	200 max.
Pressure curve	Real-time display of the injection pressure curve
Software functions (standard)	CM-Loop: Alternate switchover with two identical contrast media Display of remaining quantity NaCl backup Manual pause, time-controlled pause Timer Elapsed time
Software options	CM-Select: - Careful selection of a second contrast medium (two different contrast media are available simultaneously) - Possibility to change the type of contrast medium on the media slots by means of NaCl rinsing (no need to change the Easy-Click-Cassette)
Injector accessories	Convenience package: Media rod, waste bin and tray
Disposables	Patient tubing 2.5 m or 3.2 m Easy-Click-Cassette with holder s or holder l, Adapter rings for small bottles

Supporting member of the German Society for Hospital Hygiene (Deutsche Gesellschaft für Krankenhaushygiene e.V.)

**Over a Century  
of Innovation**

patented  
or/and  
pat. pend.



ulrich GmbH & Co. KG | Buchbrunnenweg 12 | 89081 Ulm | Germany  
Phone: +49 731 9654-0 | Fax: +49 731 9654-199  
injectors@ulrichmedical.com | www.ulrichmedical.com